

Lascaux Crystal



Lascaux Crystal is an acrylic interference colour of the latest generation: an iridescent effect colour with an incomparable brilliance, suitable for art and architectural applications.

These luminous and strong interference colours come in a broad range of color depth thanks to their excellent mixing among each other. On light backgrounds, the colours change into the complementary shade according to the angle of light whereas on dark backgrounds the principal shade appears as gloss colour.

Characteristics

- iridescent
- strong colours
- excellent intermixing
- extremely high yield
- transparent
- high-gloss
- lightfast and age-resistant
- water-resistant when dry
- very good film flexibility

Applications

- for effectual designs in artwork and modern architecture
- specific and purposeful lighting will perfectly bring out the Crystal effect

Usage

Lascaux Crystal is exceptionally economical in use since even a very thin layer will produce the effect.

The matter the surface, the stronger the effect will appear. Lascaux Crystal can be applied to virtually any surface and is suitable for various types of finishes such as paintbrush, roller or other painting tools.

Mixing:

Lascaux Crystal is very easily mixed with transparent mediums, e.g., Transparent Varnish or Medium. (Matt mediums, however, will reduce the effect.)

The addition of Lascaux Crystal to acrylic colours generally will not produce any effect. Dried acrylic colour on the other hand, can be coated to great effect with a thin layer of Lascaux Crystal as finish.

If Lascaux Crystal is added to Impasto Gel 1, 2 or 3, an iridescent effect paste can be produced. Additional colour blending with a tiny amount of Lascaux Artists (approx. 1% acrylic colour without white pigment content) can discreetly steer the hue into many different directions.

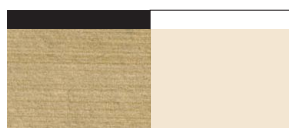
Composition

Pure acrylic formulation with specially coated mica pigments, weather-resistant, lightfast and of high colouristic intensity.

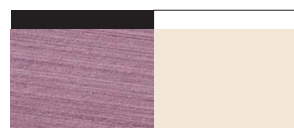
Delivery form

Bottles of 85 ml and 250 ml

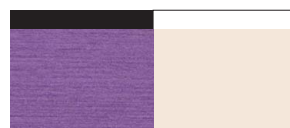
Lascaux Crystal



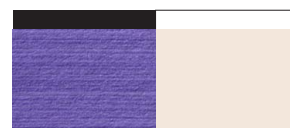
6711
Yellow
PW20/PW6/PW15



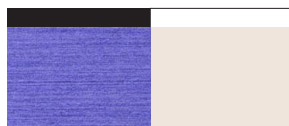
6721
Red
PW20/PW6/PW15



6731
Magenta
PW20/PW6/PW15



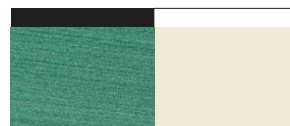
6741
Violet
PW20/PW6/PW15



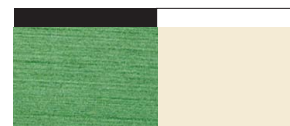
6751
Indigo
PW20/PW6/PW15



6761
Blue
PW20/PW6/PW15

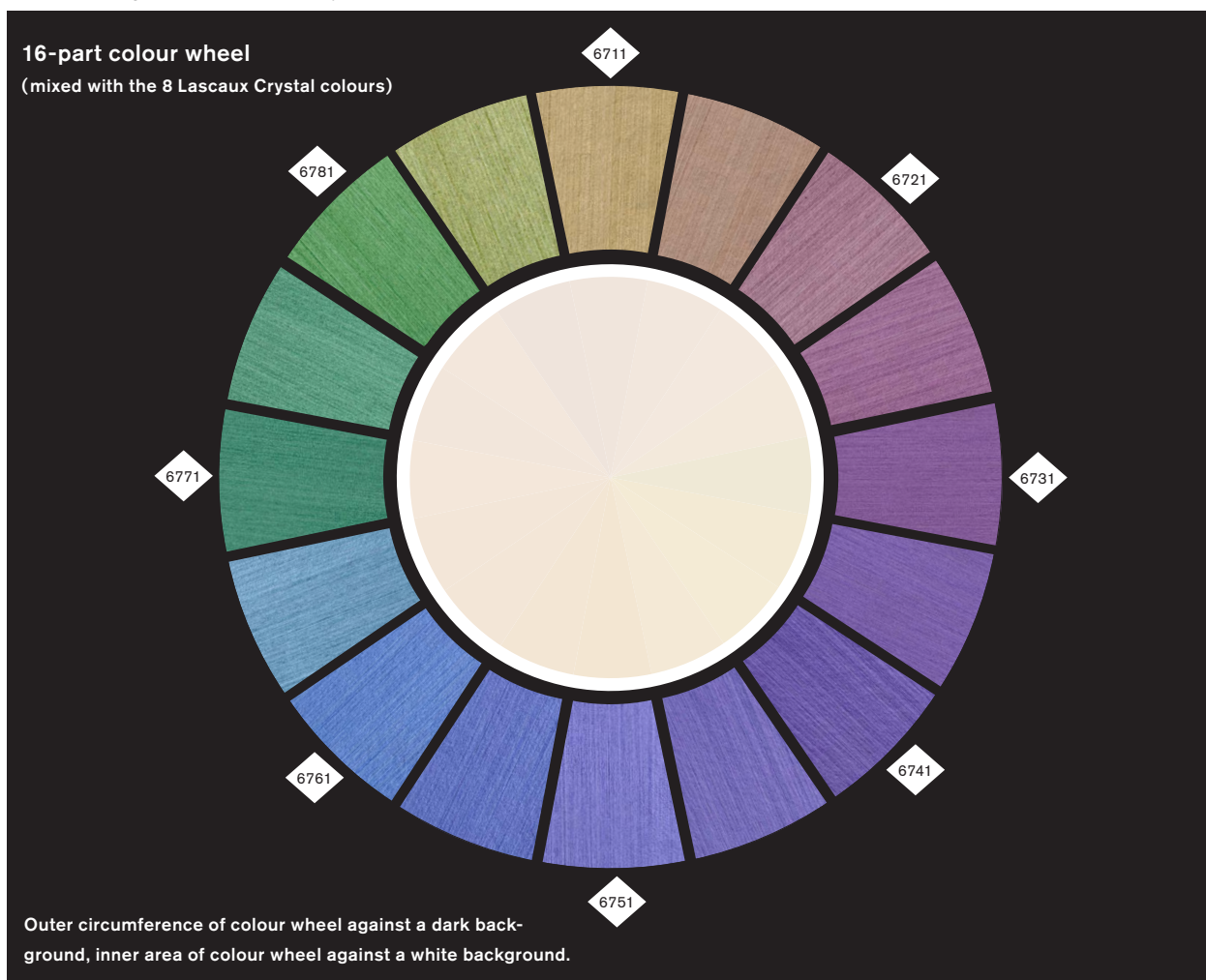


6771
Turquoise
PW20/PW6/PW15



6781
Green
PW20/PW6/PW15

*** excellent lightfastness transparent



The interference effect of Lascaux Crystal colours is not rendered with this printing technique.

Conforms to the European Safety Norm EN71-3 USA: conforms to ASTM D-4236.

Disclaimer:

The information provided above is given to the best of our knowledge and is based on our current research and experience. It does not absolve the artist from the responsibility of first testing the suitability of our products for the substrate and specific use conditions he or she has in mind. This technical sheet will become invalid with any revised edition. The latest update is always found on our website.

swiss made

Lascaux Colours & Restauro, Barbara Diethelm AG, Zürichstrasse 42, CH-8306 Brütisellen
Tel. +41 44 807 41 41, Fax +41 44 807 41 40, info@lascaux.ch, www.lascaux.ch